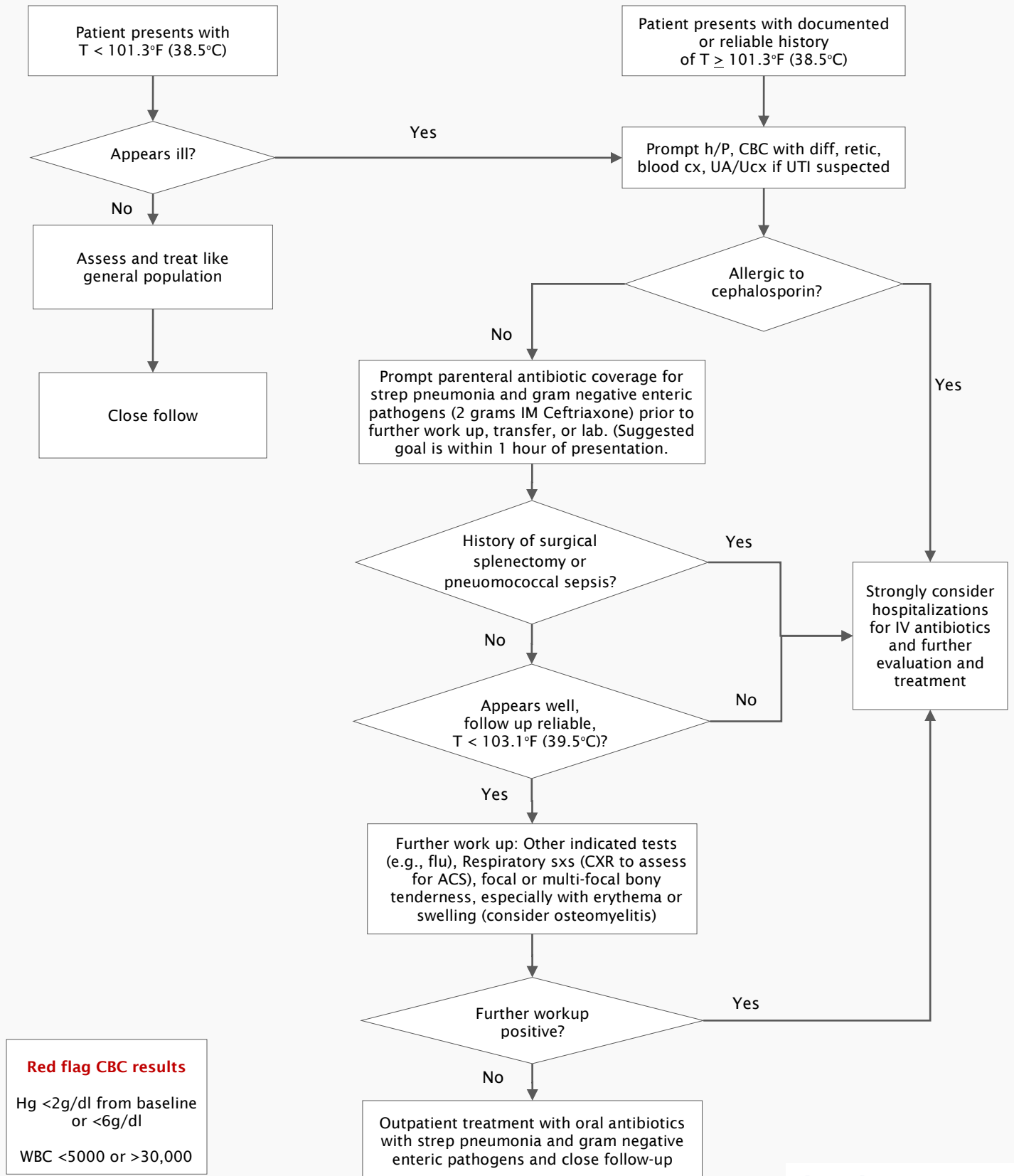


Fever in Adults with Sickle Cell

Developed by the NC Division of Public Health; the comprehensive sickle cell centers at Carolinas Health Care, Duke University, East Carolina University, University of North Carolina at Chapel Hill, Mission, and Wake Forest University; Endorsed by (SC)². Adapted from the 2014 NIH/NIHBI guidelines for Evidence-Based Management of Sickle Cell Disease.



Red flag CBC results

Hg <2g/dl from baseline or <6g/dl

WBC <5000 or >30,000